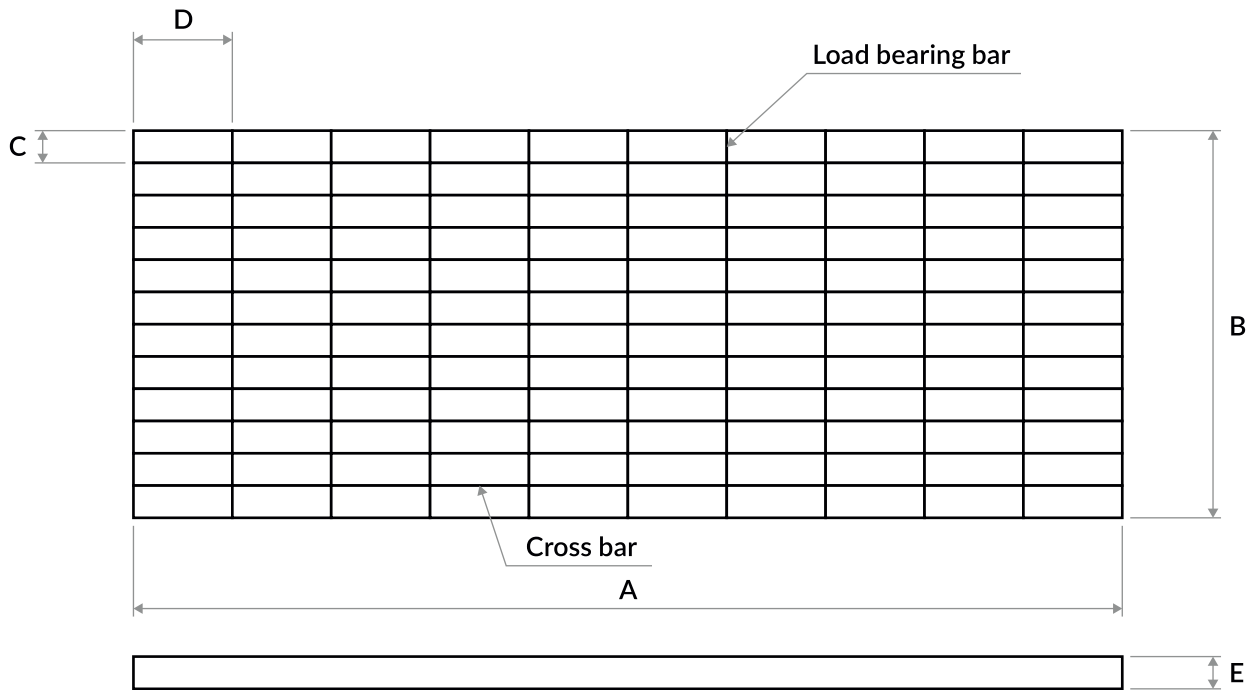


STEEL GRATING



	A [cm]	B [cm]	C [mm]	D [mm]	E [mm]
Standard	max 250	max 100	11	22, 33, 44	25, 30, 40, 50

■ PRODUCT SPECIFICATION:

This Technical Data Sheet refers to pressed, corrugated (serrated) and non-corrugated (standard) gratings.

The gratings are made of S235JR grade, regular carbon steel or structural steel of other grades with at least equivalent mechanical properties, according to PN-EN 10025-1:2007 and PN-EN 10025-2:2007 or of stainless steel of grade 1.4301 (OH18N9) and 1.4404 (OH17N14M2) according to PN-EN 10088-1:2014.

The gratings (apart from those made of stainless steel) are protected against corrosion with a zinc coating applied by immersion method according to PN-EN ISO 1461:2011 with a thickness of at least 45 μm – for items with the thickness of up to 3 mm, and at least 55 μm – for items with thickness of over 3 mm.

The gratings are made using the technology of pressing cross bars against the notches in load bearing bars. They are made of load bearing bars with the height of 25, 30, 40 or 50 mm and the thickness of 2 or 3 mm, and separating cross bars with the cross section of 9 x 1.9 mm. The gratings have a 2 or 3 mm thick flat bar framing along their entire perimeter.

There are two types of pressed gratings available: standard (non-corrugated) or corrugated (serrated). The corrugated gratings are made of a load bearing bar with (trapezoidal or half-round) notches on the top edge with the depth from 2.2 to 3.3 mm.

The maximum grating dimensions are: 250 cm – for the length (B) and 100 cm – for the width (A) of the gratings.